



#LuxuryGoesLush

DOSTI
GREENSC&PES



A LEGACY PAR EXCELLENCE.

MORE THAN
40 YEARS
OF EXPERTISE IN THE
REAL ESTATE SECTOR

OVER
21 MN. SQ. FT.
UNDER CONSTRUCTION
ACROSS MUMBAI METROPOLITAN
REGION & PUNE

COMPLETED
A TOTAL OF
131
PROJECTS
TILL DATE

TRANSFORMED
THE SKYLINE WITH
12.15 MN.SQ.FT.
OF DEVELOPMENTS

A HOMES TO
MORE THAN
20,600+
FAMILIES

EXPERIENCE IN VARIOUS DEVELOPMENT TYPES,
BE IT RESIDENTIAL, RETAIL, IT PARKS, EDUCATIONAL INSTITUTES, ETC.

KNOWN FOR ITS AESTHETICS,
INNOVATION, QUALITY, TIMELY DELIVERY, TRUST AND TRANSPARENCY,
VALUES THAT HAVE BUILT LASTING RELATIONSHIPS.



Some Milestones



Actual Image

TRANSFORMED WADALA (ANTOP HILL) AS A DESTINATION 2002 WITH DOSTI ACRES - WADALA



Actual Image

INTRODUCED THE SOCIETY CLUBHOUSE CULTURE- 2005 DOSTI ACRES AT WADALA



Actual Image

CREATED A THEME BASED PROJECT-2005 DOSTI FLAMINGOS - PAREL SEWRI



Actual Image

ALLUMINIUM SHUTTERING FORMWORK TECHNOLOGY USED SINCE 2011 STARTING WITH DOSTI VIHAR

FIRST ROOFTOP SWIMMING POOL IN WADALA 2016 AT DOSTI AMBROSIA



Actual Image

DEVELOPED THE DOSTI FOUNDATION SCHOOL- FIRST ICSE SCHOOL IN SHIL THANE 2016



Actual Image

CONSTRUCTED A 17,000 SQ.FT. LOBBY IN DOSTI EASTERN BAY - WADALA IN 2023



Actual Image

Awards and Accolades

**Dosti Greater Thane
Kalher**



Mid - Day Gems of India Awards, 2023

**Dosti West County
Dosti Nest Thane (W)**



Mid - Day International Real Estate & Infrastructure Icons Awards 2022

**Dosti Mezzo 22
Sion**



Mid - Day International Real Estate & Infrastructure Icons Awards 2022

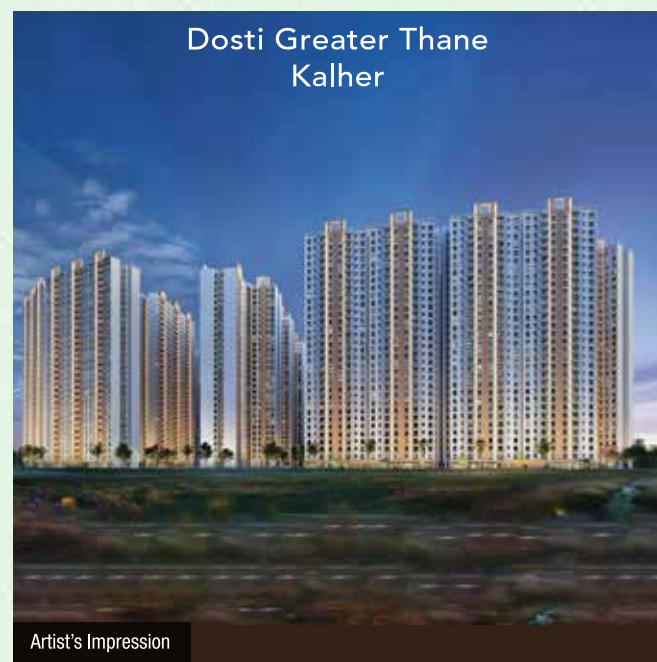
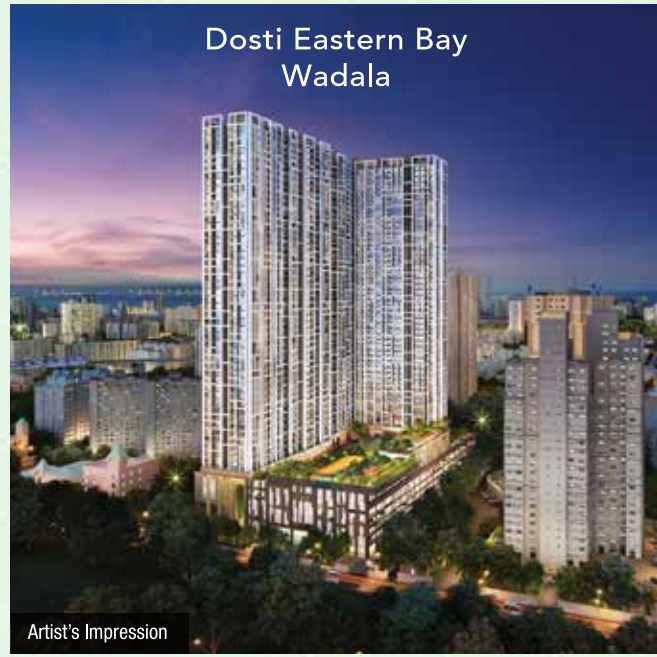
**Dosti Eastern Bay
Wadala**



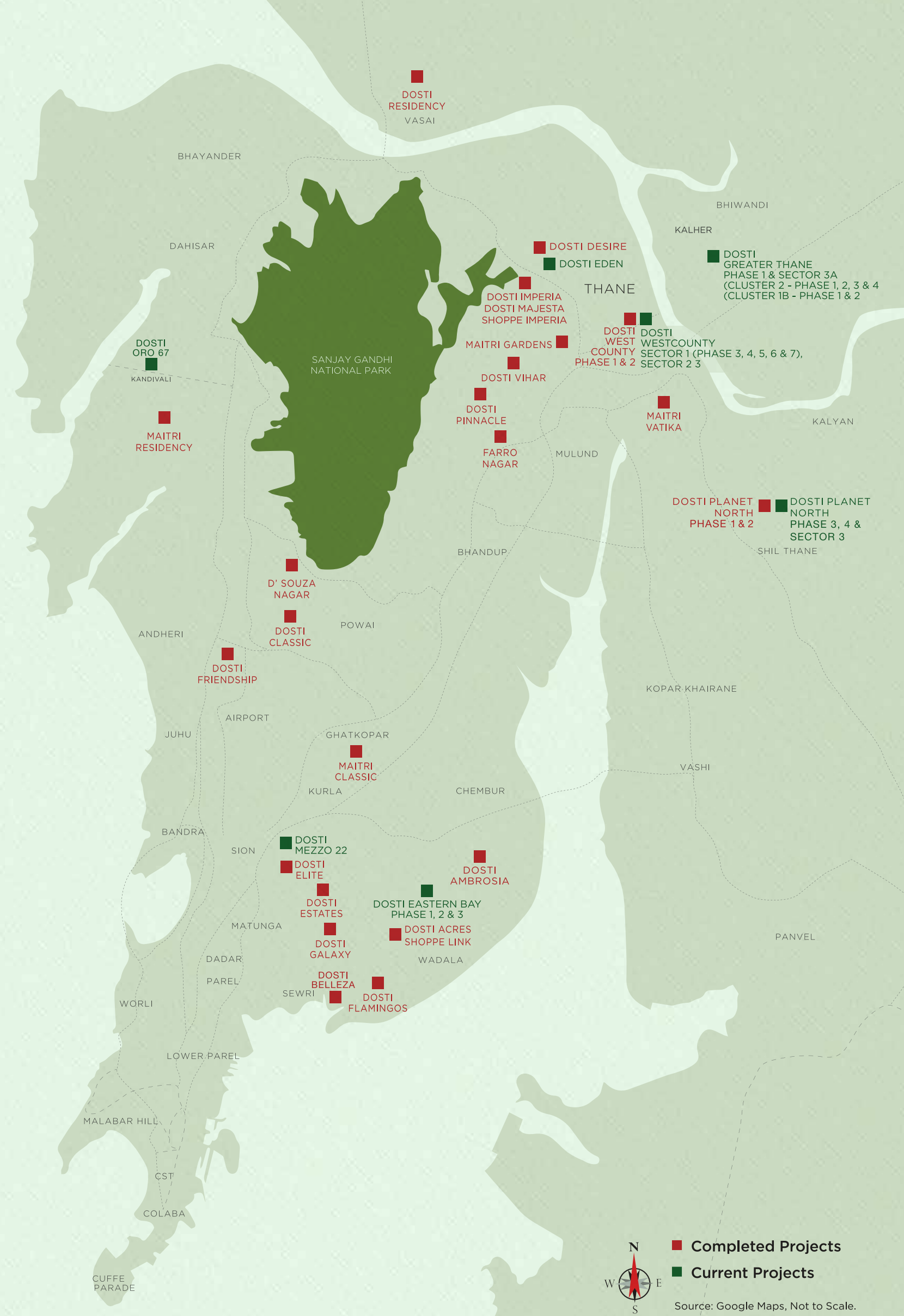
Times Real Estate Conclave & Awards 2021

Discover your friends for life.

Footprint in the Mumbai Metropolitan Region



Dosti Mezzo 22 is registered under MahaRERA No. P51900026976, Dosti Eastern Bay-Phase 1, 2 & 3 are registered under MahaRERA Nos. P51900025142, P51900030769 & P51900032067, Dosti West County - Dosti Maple - Phase 6 is registered under MahaRERA No. P51700054424, Dosti Desire Phase 2 is registered under MahaRERA No. P51700049421, Dosti West County - Dosti Nest - Phase 1, 2, 3 & 4 is registered under MahaRERA Nos. P51700033640, P51700033663, P51700049724 & P51700050253, DGT - Sector 3A - Cluster 2 - Phase 1, Phase 2, Phase 3 & Phase 4 are registered with MAHARERA Nos. P51700048334, P51700048335, P51700048333 & P51700053095, Dosti Greater Thane - Sector 3A - Cluster 1B - Phase 1, Phase 2 & Phase 3 are registered with MahaRERA Nos. P51700053057, P51700053096 & P51700053217. All the above projects are available on website - <https://maharera.mahaonline.gov.in> under registered projects. Please note that the sale/lease of premises in the above referred projects shall be subject to and governed by the terms and conditions of Agreement for sale/lease. T&C Apply.



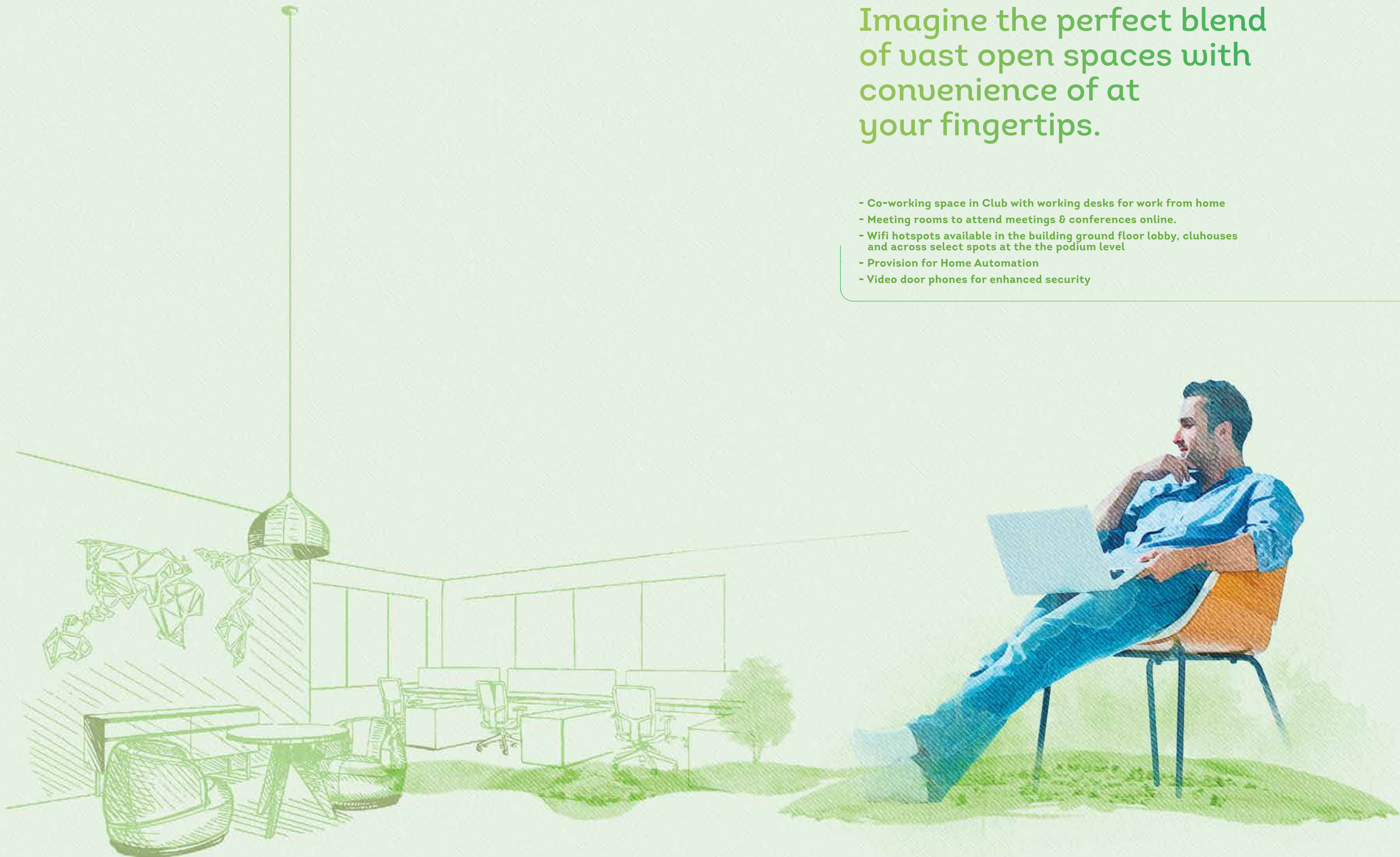
Now imagine family time with the experiences of a luxurious holiday everyday.

- Green views
- 35 + lifestyle amenities
- Spacious homes
- Serene and peaceful surroundings



Imagine the perfect blend
of vast open spaces with
convenience of at
your fingertips.

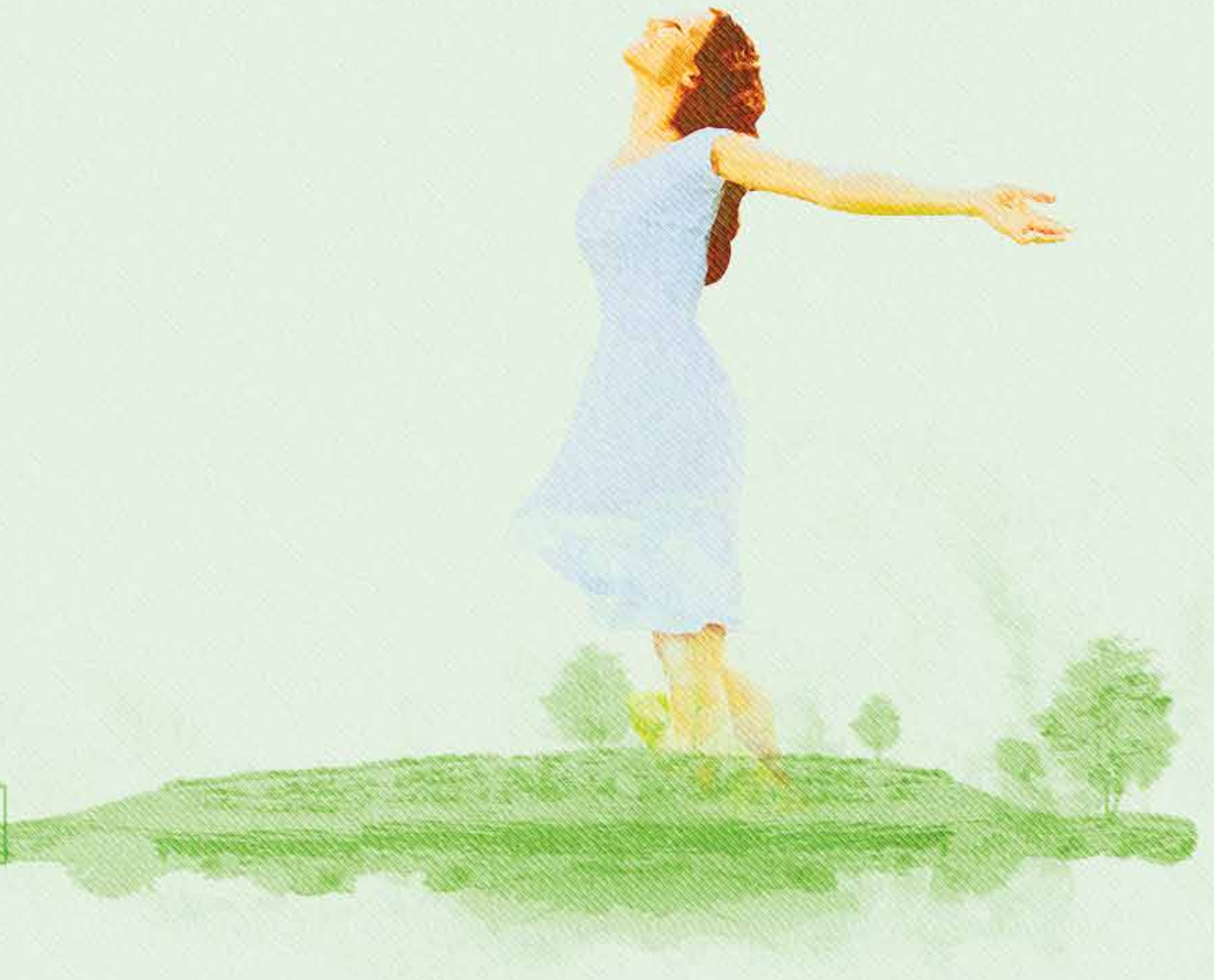
- Co-working space in Club with working desks for work from home
- Meeting rooms to attend meetings & conferences online.
- Wifi hotspots available in the building ground floor lobby, cluhouses and across select spots at the the podium level
- Provision for Home Automation
- Video door phones for enhanced security





Imagine a better tomorrow in the place you will call home.

- EV charging points
- Solar power used for lighting the podium areas
- Solar power used for heating water
- Motion sensor enabled lighting in the podium and common areas
- Dedicated Individual private surface parking space for every flat owner
- RFID system for easy entry & exit of flat owner's vehicles in & out of the premises
- Surface Tandem Parking provided at lower and upper ground parking levels will be with Parking Valet



Imagine a home that
surrounds you with bliss
without taking you
away from the city.





Presenting

DOSTI GREENSCAPES

2, 3 & 4 BHK homes
that come surrounded
with nature in abundance.

Welcome to homes that believe true luxury is about spaces that need to be measured in acres, not merely square feet.

Dosti Greenscapes augments your lifestyle with privileges that're hard to experience within a crowded city. The luxury of openness, the grandeur of nature and the magnificence of silence. Discover how blissful your life can truly become when [#LuxuryGoesLush](#).

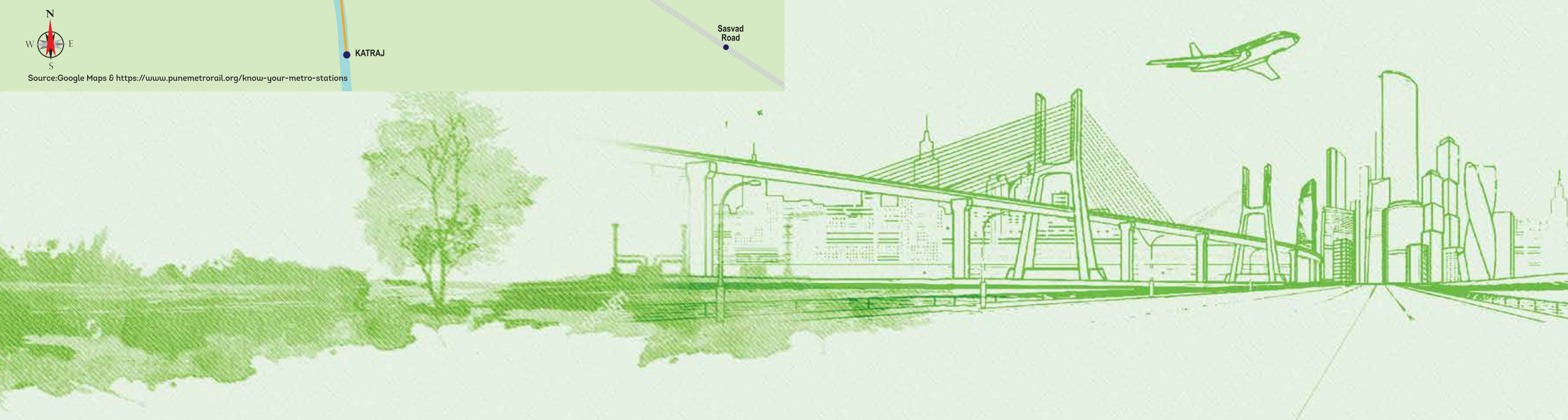


A spot that keeps you close to the city while taking you close to nature.

Situated near Magarpatta, Dosti Greenscapes is at a perfect balancing point. A point that surrounds you with swathes of calming vistas for as far as your gaze can wander. However, if you were to turn on your Google Maps, you'll be surprised to see prominent work hubs as well as established hubs of education, retail and healthcare within minutes of your home. Welcome to a world where your views change dramatically but not your everyday lifestyle.

Cybercity Magarpatta	5 mins	2.8 kms	Market Yard	12 mins	7.1 kms
MG Road	8 mins	4.6 kms	Koregaon Park	12 mins	7.2 kms
SP Infocity	10 mins	4.9 kms	WTC Kharadi	20 mins	8.4 kms
Hadapsar Railway Station	12 mins	5.5 kms	EON IT Park	22 mins	8.6 kms
Pune Railway Station	12 mins	6.3 kms	Cerebrum IT Park	22 mins	8.7 kms
Kalyani Nagar	15 mins	6.7 kms	Airport	34 mins	11.7 kms

Source: Google maps. As per normal traffic conditions



Source: Google Maps & <https://www.punemetrorail.org/know-your-metro-stations>

Strategically Connected

PUBLIC PARKS

Empress Botanical Garden	8 mins	3.5 kms
Nana Nani Park	10 mins	4.1 kms
Muredha Nala Park	10 mins	4.5 kms
Joggers Park	15 mins	7.3 kms
Kausar Baugh Garden	20 mins	7.5 kms
Osho Garden	58 mins	7.7 kms
ABS Vertical Gardening	24 mins	9.8 kms
Okayama Friendship Garden	25 mins	10.2 kms
Oval Garden	35 mins	15.1 kms

HOTELS & SPAS

The Westin	7 mins	5.6 kms
Lemon Tree Premier	8 mins	5.9 kms
Vivanta By Taj	17 mins	6.1 kms
Central Park Hotel	18 mins	6.6 kms
O Hotel	15 mins	7.1 kms
Sheraton Grand	15 mins	7.2 kms
Conard Hotel	20 mins	7.9 kms
Radisson Blu	20 mins	8.9 kms
Ritz Carlton	20 mins	8.9 kms
Novotel	20 mins	9.8 kms
Hyatt Pune	24 mins	10.8 kms
JW Mariott	30 mins	15.8 kms

EDUCATIONAL INSTITUTES

Eurokids Pre School	8 mins	2.9 kms
Vibgyor High International School	7 mins	2.7 kms
Billabong High International School	11 mins	3.2 kms
Wisdom World School, Hadapsar	11 mins	3.3 kms
The HDFC School	11 mins	3.6 kms
Pawar Public School	11 mins	4.1 kms
Amanora School	14 mins	5 kms
Innovative International School	16 mins	5.2 kms
Orchids International School, Manjari	14 mins	5.5 kms
RIMS International School	18 mins	5.9 kms
Delhi Public School	18 mins	6.3 kms
VIT College of Architecture	6 mins	1.8 kms
NMIMS	9 mins	3.1 kms
Jayawantrao College of Engineering	10 mins	3.3 kms
PDEA's Law College	11 mins	4.1 kms
Jayawantrao College of Pharmacy and Research	13 mins	4.4 kms
Jayawantrao College of Education	17 mins	5.4 kms
Christ College	26 mins	9.8 kms
Symbiosis College	25 mins	10.4 kms
Garware College of Commerce	28 mins	10.4 kms
Fergusson College	35 mins	11 kms
SNDT Women's University	34 mins	12 kms
MIT World Peace University	37 mins	13.7 kms
Ajeenkya DY Patil University	40 mins	19 kms
Flame University	1 hr	25 kms
Symbiosis University	1 hr	26 kms

MULTI-SPECIALITY HOSPITALS

Noble Hospital Hadapsar	4 mins	1.2 kms
Villow Punawalla Memorial Hospital	4 mins	1.3 kms
Tata Charitable Hospital	6 mins	1.4 kms
Sahyadri Super Speciality Hospital	5 mins	1.6 kms
Ruby Hospital	15 mins	5.4 kms
Life Care Multispeciality Hospital	23 mins	9.8 kms

SHOPPING MALLS & ENTERTAINMENT

Mauli Market	4mins	900 Mtrs
93 Avenue Mall	6 mins	2 kms
Dolphin Mall	6 mins	2 kms
Pancham SuperMarket	8 mins	2.2 kms
Savitri Shopping Complex	7 mins	2.4kms
Dmart Fatimagar	9 mins	2.5 kms
Dmart Hadapsar	10 mins	2.7 kms
Seasons Mall	7 mins	3 kms
Cinepolis	8 mins	3 kms
Star Bazaar	9 mins	3.2 kms
BB FC Bazaar Magarpatta	10 mins	3.5 kms
Amanora Mall	10 mins	3.5 kms
Inox	10 mins	3.6 kms
Decathlon	10 mins	3.7 kms
Gera Mall	15 mins	5.5 kms
Reliance Mart	15 mins	6.7 kms
The Corinthian Club	20 mins	6.7 kms
Carnival Cinemas	15 mins	6.7 kms
Big Bazaar	19 mins	7 kms
PVR	15 mins	7.2 kms
Royal Heritage Mall	20 mins	8 kms
Dmart Undri	20 mins	8 kms
Laxmi Market	30 mins	8.2 kms
Balaji Market	20 mins	8.4 kms
Inorbit Mall	25 mins	10.3 kms
The Pavilion	25mins	10.4 kms
Phoenix Mart City Viman Nagar	25 mins	11.7 kms
Westend Mall	40 mins	16.3 kms

COMMERCIAL

Magarpatta IT Park	5 mins	2.3 kms
SP Infocity	12 mins	4.9 kms
MG Road	15 mins	5.5 kms
Kalyani Nagar	15 mins	6.8 kms
Koregaon Park	15 mins	7.1 kms
Cerebrum IT Park	15 mins	7.2 kms
Kharadi	20 mins	8.3 kms
Boat Club Road	18 mins	8 kms
World Trade Centre	25 mins	8.4 kms
Eon IT Park	20 mins	8.7 kms
Global Business Hub	20 mins	9.9 kms
Deccan	30 mins	10.8 kms

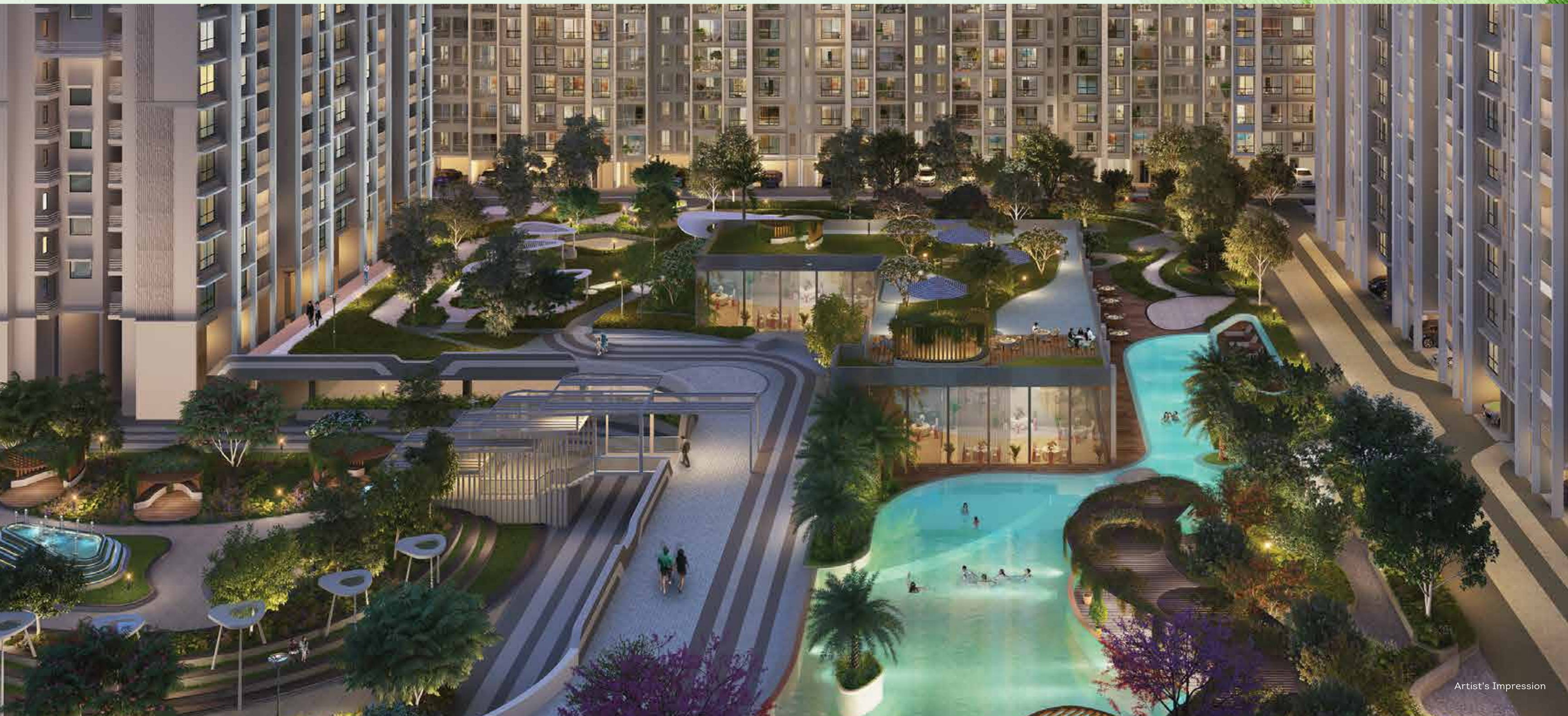
TEMPLE

Temples		
Shree Sai Baba mandir	4 mins	900 mtrs
Datta Mandir	6 mins	2 kms
Ganpati Mandir	3 mins	1.1 kms
Shankar Nath Temple	5mins	1.6 kms
Hanuman Mandir	5 mins	2 kms
St Mary's Church	10 mins	4.5 kms
St Paul's Church	22 mins	7.5 kms



Behold amazing experiences created both, by nature and mankind.

At Dosti Greenscapes, your luxurious life isn't about experiencing one comfort while giving up on another. An extensive array of lifestyle amenities will see to it that you get to enjoy life to its fullest.





Here, everything for a plush and lush life has its rightful place.

LEGENDS

- | | | | | | |
|------------------------|---------------------------|--------------------|-------------------------------|-----------------------------|---------------------------|
| 1 Drop Off Area | 8 Walkway/Jogging Track | 15 Sun Deck | 22 Scent Garden | 29 Arrival Plaza | 36 Entry/Exit Guard House |
| 2 Resting Pavilion | 9 Butterfly Garden | 16 Kid's Pool | 23 Children's Playground | 30 Sculpture Garden | 37 Driveway Ramp |
| 3 Multipurpose Court | 10 Pool Pavilion | 17 Alfresco Dining | 24 Toddler's Playground | 31 Cascading Water Features | 38 Periphery Planting |
| 4 Rock Climbing Wall | 11 Lounge Pool Deck | 18 Family Pavilion | 25 Party Lawn | 32 Drop Off Shelter | 39 Resting Pavilion |
| 5 Floral Garden | 12 Wellness Deck | 19 Social Deck | 26 BBQ Pavilion | 33 Sitting Alcove | |
| 6 Elderly Fitness Zone | 13 Lap Pool (Family Pool) | 20 Greenery Corner | 27 Open Lawn | 34 Court Yard Garden | |
| 7 Seating | 14 Jacuzzi | 21 Picnic Lawn | 28 Cascade Seats With Trellis | 35 Tennis Court | |

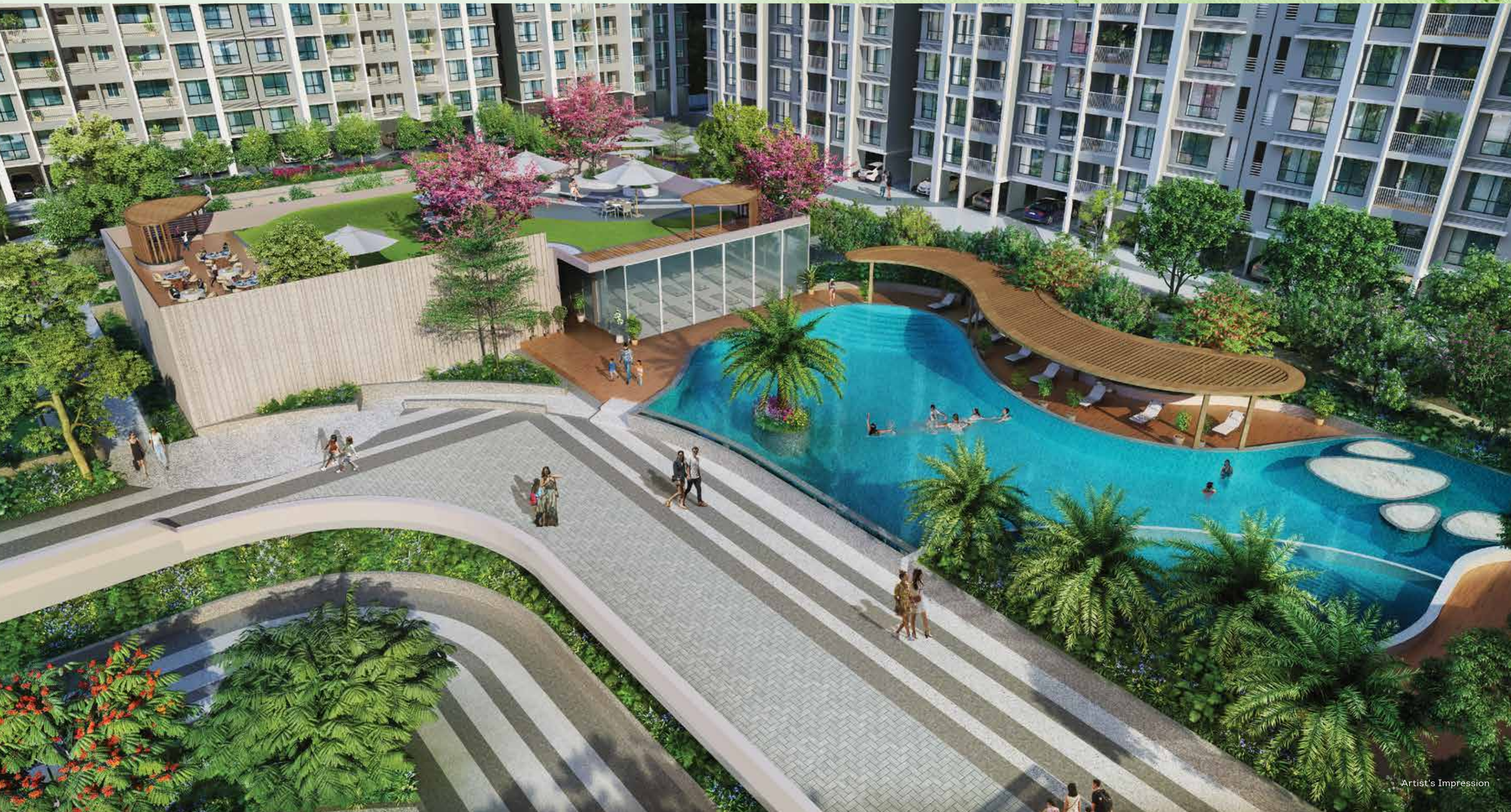
750+ trees to be planted in Dosti Greenscapes

Disclosure: Dosti Greenscapes Project is being developed on a large layout and the buildings and common amenities shall be constructed in phase wise manner. Amenities from Serial No 1 to 18 will be completed by 31st Dec. 2027 while amenities from serial No 19 to 39 will be completed by 31st Dec. 2032.

It's an inspiring,
happening world,
outside your home.



Experience a flamboyant Lifestyle everyday with all the comforts you desire.



Celebrations will be
a privilege that you'll indulge
in round the year.



Discover plenty of reasons to be un-sedentary.



There's a time to run and then,
there's a time to pause.



Rejuvenation will be your daily dose
and not a distant dream.



Just a few steps to embrace serenity
that'll last forever.



OUTDOOR AMENITIES

- Resting Pavilion
- Multipurpose Court
- Rock Climbing Wall
- Floral Garden
- Elderly Fitness Zone
- Seating
- Walkway/Jogging Track
- Butterfly Garden
- Pool Pavilion
- Lounge Pool Deck
- Wellness Deck
- Lap Pool (Family Pool)
- Jacuzzi
- Sun Deck
- Kid's Pool
- Alfresco Dining

- Family Pavilion
- Social Deck
- Greenery Corner
- Picnic Lawn
- Scent Garden
- Children's Playground
- Toddler's Playground
- Party Lawn
- BBO Pavilion
- Open Lawn
- Cascade Seats With Trellis
- Sculpture Garden
- Cascading Water Features
- Sitting Alcove
- Court Yard Garden
- Tennis Court



Stock Image



Stock Image



Stock Image



Stock Image



Stock Image



Stock Image



Artist's Impression



Stock Image



Artist's Impression



Artist's Impression

DOSTI CLUB BLISS

- Gymnasium
- Rooftop Yoga
- Billiards/Pool Table
- Chess & Carrom Area
- Mini Library
- Tech Enabled Meeting Rooms
- Conference Room
- Co-Working Spaces
- Rooftop Seating

Common Creche with CCTV

Dosti Club Bliss will be completed by 31st Dec. 2027
 Dosti Club Lush will be completed by 31st Dec. 2032

DOSTI CLUB LUSH

- Banquet Hall
- Multipurpose Hall
- Rooftop Seating



Artist's Impression



Stock Image



Artist's Impression



Stock Image



Artist's Impression



Stock Image



Artist's Impression



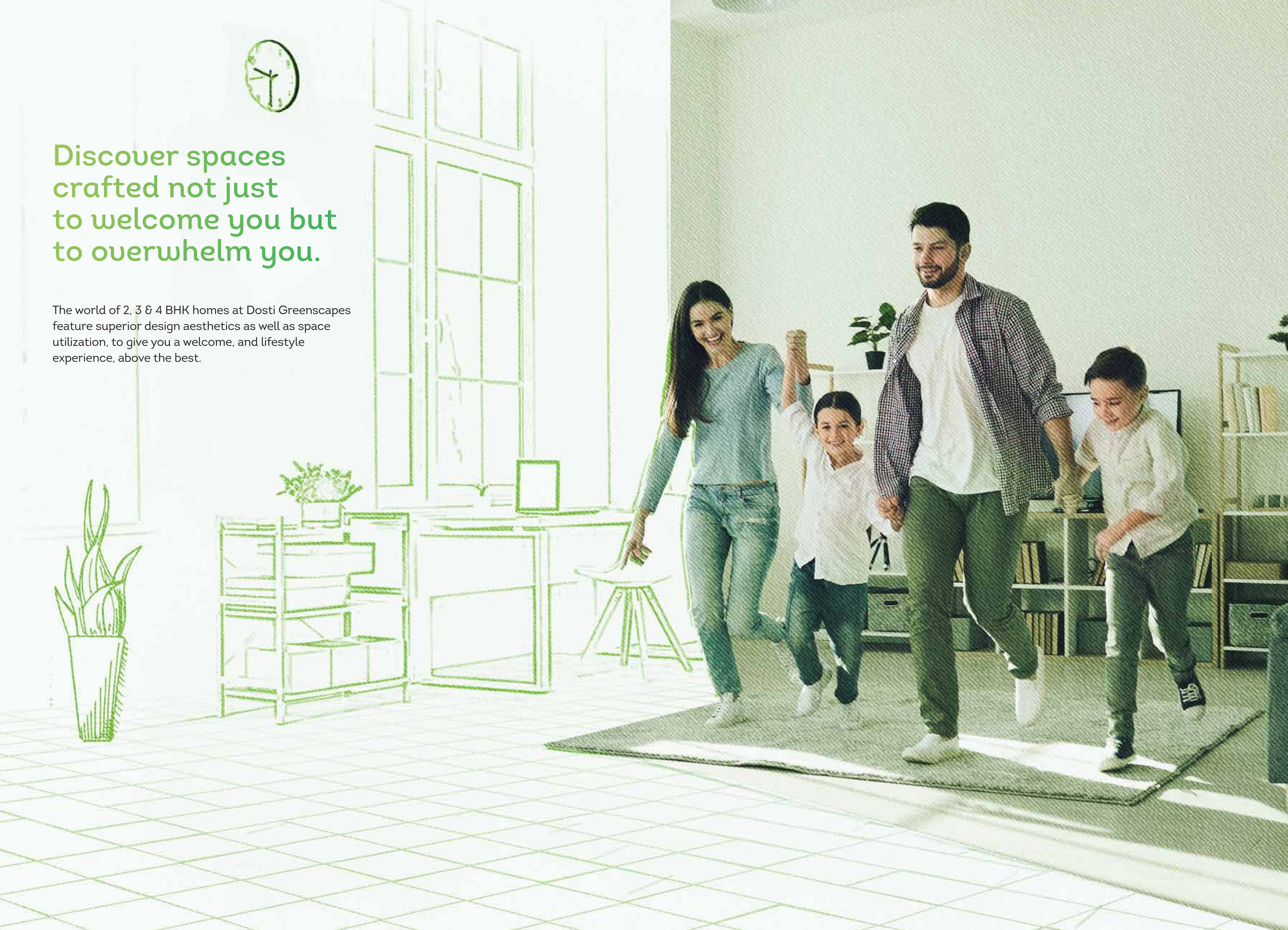
Stock Image



Stock Image

Discover spaces crafted not just to welcome you but to overwhelm you.

The world of 2, 3 & 4 BHK homes at Dosti Greenscapes feature superior design aesthetics as well as space utilization, to give you a welcome, and lifestyle experience, above the best.



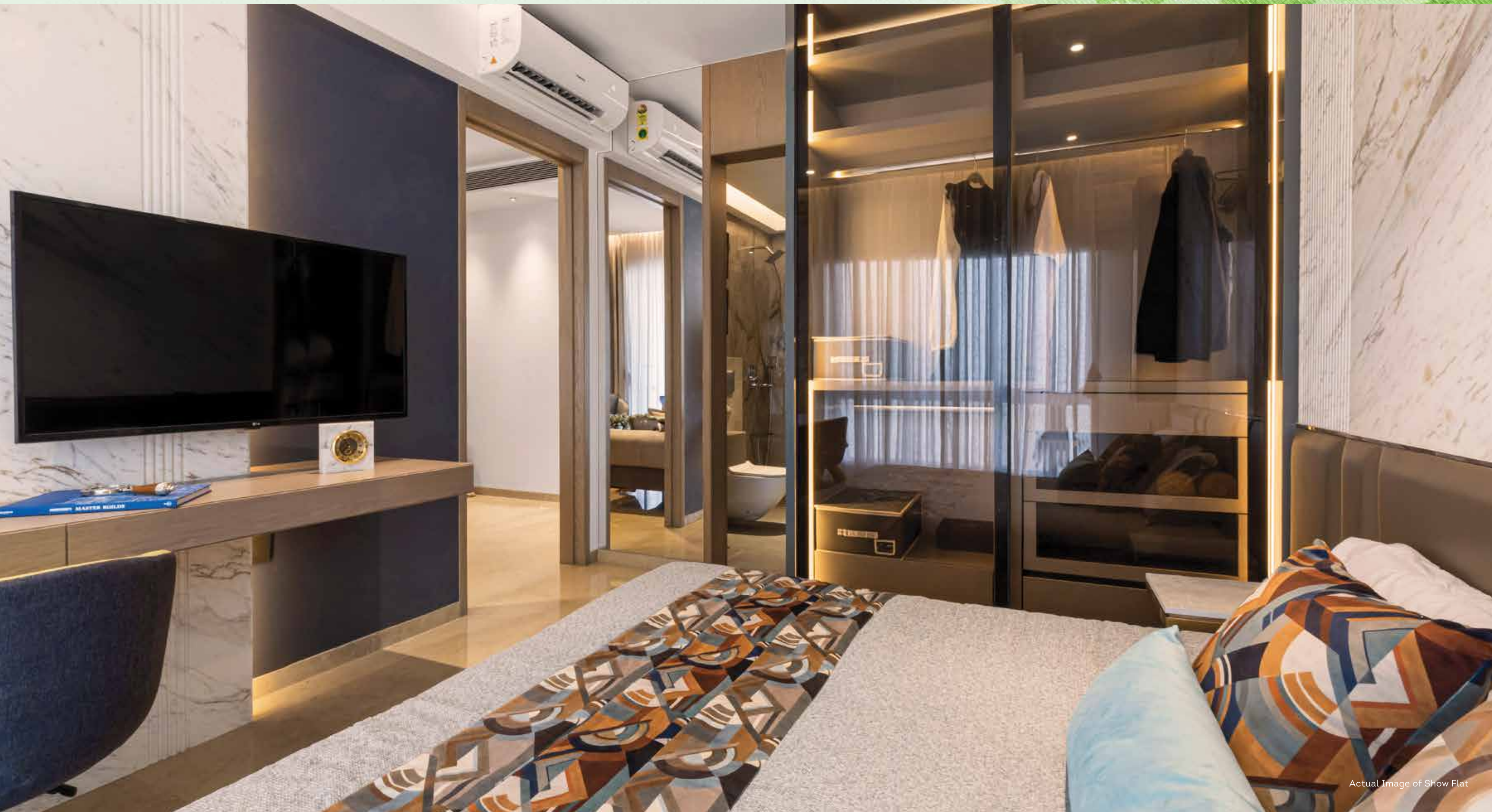
Elevate your lifestyle
to a grander way of living.



Fill your life with delightful experiences
in every way, every day.



Give every great day
an enchantingly soothing end.



A place where you dream
of your dreams coming true.



Internal Specifications & Building Features

FLOORING

Vitrified flooring in living/dining bedroom, kitchen and passage

KITCHEN

Kitchen platform with marble support

Stainless steel sink of reputed make

4 ft (2ft x2ft tiles) dado of reputed make above the kitchen platform

ELECTRICAL

Electrical wiring & fitting of concealed type P.V.C conduit

All switches of ISI Mark

One ELCB per flat and MCB for each room

TV, AC point, ceiling fan point and regulator point in living and all bedrooms

Telephone and WIFI point provision

DOOR

Flushed Doors in living, bedrooms with laminate finish

WINDOWS

Sliding windows with engineered frames with clear glass

Mosquito net for bedroom and living room

Sturdy railing in living room & utility balcony

PAINTING

Gypsum coated internal walls

Premium eco-friendly quality paint for walls and ceilings

SANITARY

Good quality matt finished anti-skid tiles for all toilets flooring

All toilets with dado tiles

Concealed plumbing with standard fittings.

Deluxe C. P. brass fittings

Sanitary fittings of standard make

Hot water instant geyser of 3 litre capacity

Toilet doors with laminate finish

Well ventilated bathrooms

Decorative ceiling in toilets

SECURITY

Video Door phone and Intercom system in each flat

Technology based access control system for the society.

BUILDING FEATURES

Common toilets at ground floor level

Fire control room with Firefighting & fire alarm system for the building

Security access control with CCTV provision at podium & main entrance lobby

Electrical and power backup for common areas

Security access control

Smoke detectors in common lobbies

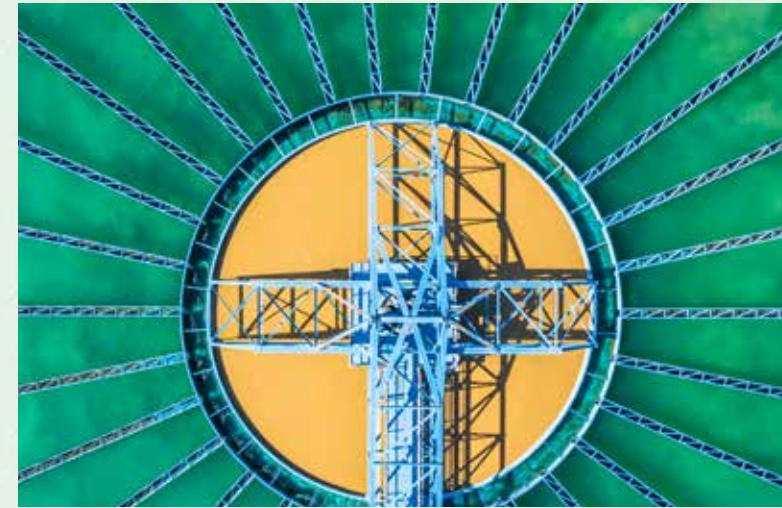
Society office

Common room and toilets for drivers and housekeeping



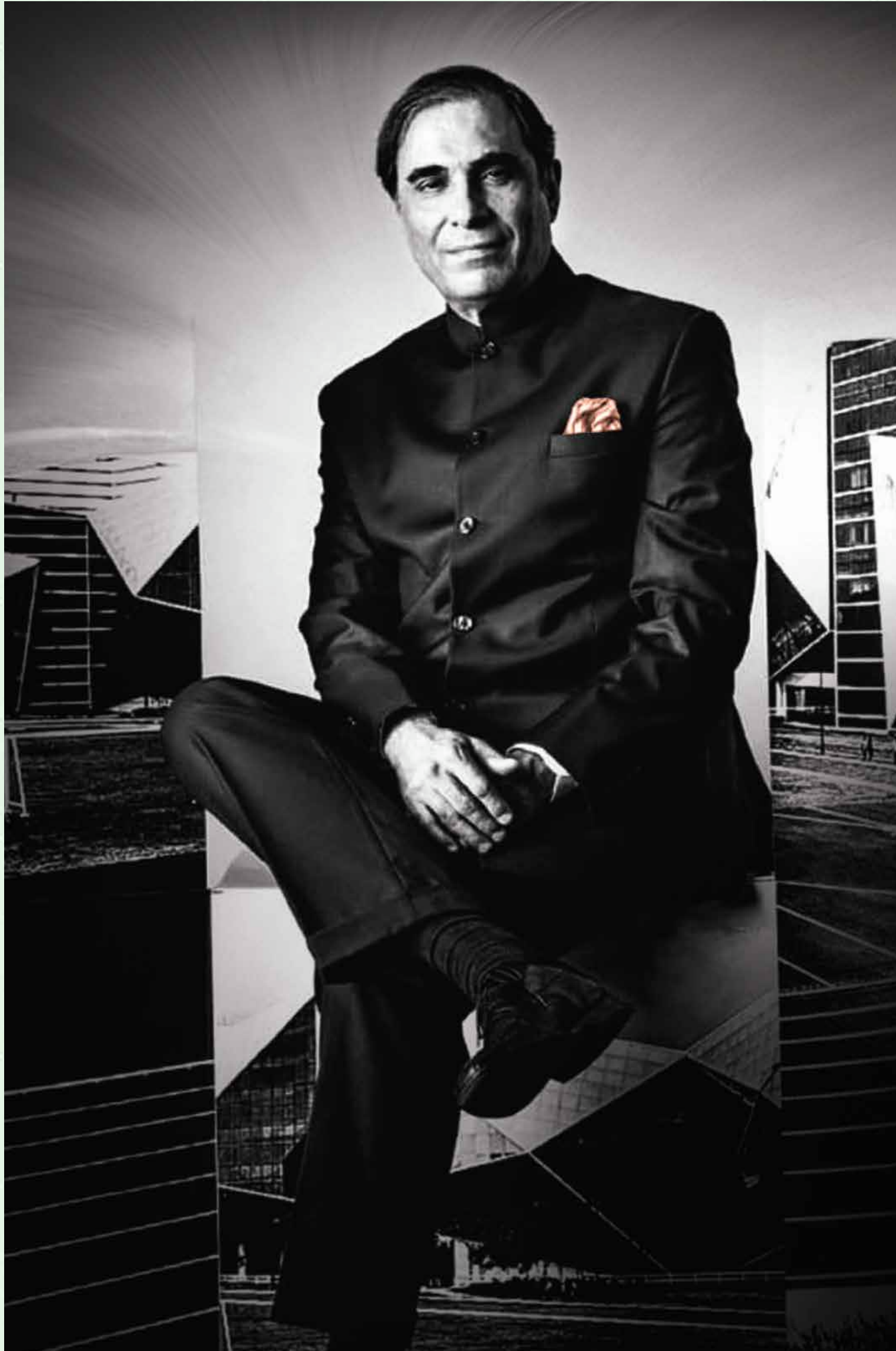
Green Features

- Rain water harvesting
- Sewage treatment plant
- Organic waste composter
- Solar panels for hot water
- Energy efficient lights in common areas
- Efficient use of natural ventilation
- Low VOC paints
- Water efficient fixtures
- Use of recycled water for flushing and gardening
- Native plant species for landscaping
- Outdoor sports activities for health conscious environment
- Ramps for access / entries for elderly and specially abled



Stock images used for representational purpose only





The Team

Architect Hafeez Contractor

Project Architect

With extraordinary architectural expertise, Architect Hafeez Contractor has impacted the skyline of major Metropolitan Cities of India with an unmistakable identifying stamp. He set up practice in 1982 with a dedication to design excellence, efficient delivery and sophistication in building technology. Today, Hafeez Contractor heads the largest architectural firm in India, with over 550 team members, comprising architects, urban/town planners, interior designers, landscape artists, civil engineers, CAD operators and 3D and graphic designers.

He is the winner of over 75 National and International Awards for excellence in contributions to architecture including CWAB Architect of the Year (2006 to 2013), A+D Hall of Fame for the Decade Award. In the year 2016, he was accorded the Padma Bhushan, the third Highest Civilian Award in India. He has been included twice in India Today's Most Powerful Indians List in the last decade and has won innumerable awards for best residential, commercial, educational and hospitality projects across India.

The impressive chart of work that Ar. Contractor catalogs include some of the tallest structures on the subcontinent, The Imperial Towers, Mumbai; one of the tallest residential buildings in the world, 23 Marina, Dubai, Infosys campus in Shanghai and Hang Zhou, and has modernized the two busiest airports of the country, Mumbai and New Delhi; and one of the best cricket stadiums of the world, DY Patil Stadium, Mumbai.

Mr. Contractor has further designed Dosti Elite, Dosti Flamingo, Dosti Galaxy, Dosti Acres, Dosti Ambrosia, Dosti Eastern Bay, Dosti Greater Thane, Dosti Mezzo 22 and is designing multiple other projects for Dosti Realty.



STRUCTURAL CONSULTANT - JW CONSULTANTS LLP



Started as a proprietary practice in the year 1975, it has now evolved into JW Consultants LLP. Over four decades, JW Consultants LLP has stayed true to the meticulously selected tenets of professional practice, while combining superior design and quality standards with stringent compliance. Driven by innovation, JW has created its footprint across residential, commercial, industrial, retail, institutional, hospitality, and healthcare sectors, among others in India and even Internationally. With their core strengths in technical expertise, cutting-edge software modelling and analysis tools, along with the best talent, they were able to deliver 70 million sq. ft. of space annually.

Dosti Realty's alliance with JW is more than 8 years old. They are currently working on several Dosti Realty projects such as Dosti West County, Dosti Planet North, Dosti Eastern Bay etc

LAXMAN THITE AOP - MUNICIPAL ARCHITECT

MR. LAXMAN THITE

Laxman Thite Association Of Persons, known as LTAOP is an association formed to offer consultancy services. LTAOP is constituted as a consultancy firm offering consultancy in the field of design, liaison and due diligence in Real Estate and is in operation since 1st January 2019. The Principal member Mr. Laxman Thite is a senior architect heading the proprietary firm, practicing under the name & style 'Laxman Thite Architect' over 4 decades and has earned a remarkable reputation. They have in-house expertise for obtaining most approvals, and are engaged in projects across the Pune region. Their team is a group of dedicated professionals with expertise of development regulations & experience across a wide range of projects. Integrity & perseverance form the core values of the organization enabling them to gain their clients' trust and appreciation.



SN JOSHI PVT LTD - MEP CONSULTANT



They were established in the year 1991 & are one of the leading consultancy firm offering exclusive MEP engineering and design consultancy services for Real Estate Developers in India. They provide design of HVAC systems, Electrical installations, Fire Fighting, BMS and Plumbing for residential, institutional, and commercial and infrastructure projects. They take pride in timely deliveries of quality outputs and demonstrating high degree of Professionalism. Their outputs are well coordinated for all the disciplines as they are executed under the same roof. The organisation has successfully delivered their expertise in various projects such as Tata Housing Development Project at Kolkatta, DLF Akriti Pune, Viviana Mall Thane, Rohinjan Garden, Auris Serenity & The Xclusiv at Mumbai.

S. N. Joshi Consultants Pvt. Ltd. are designing other projects of Dosti Realty such as a luxurious Sky scraper in Lower Parel, Dosti Mezzo 22 in Mumbai and a Residential Township styled project - Dosti Greater Thane

KULKARNI ASSOCIATES - VERTICAL TRANSPORT CONSULTANTS

MR. PRASHANT KULKARNI

They are highly experienced in the field of Vertical Transportation having a vast exposure of more than 10 years in a specialized field in Technical Auditing of Elevators and Escalators have launched their independent venture in Mumbai. Having worked with a leading International Vertical Transportation Consultancy Firm in India for more than 10 years and auditing hundreds of units pan India, they have understood how the lifeline of the buildings is important to its users for enhancing overall use and effectiveness. With their experience and expertise, they have been able to enhance improvement in Vertical Transportation service levels including Safety from their elevator service vendors.

Dosti Realty have been associated with Mr. Prashant Kulkarni for the last 15+ years in Dosti Ambrosia, Dosti Imperia, Dosti West County, Dosti Eastern Bay, Dosti Mezzo 22, Dosti Lower Parel, etc.



SITE CONCEPTS INTERNATIONAL LIMITED - LANDSCAPE CONSULTANT

Site Concepts International Limited, is an established Landscape Architect with over 30 years in industry. Mark Mahan is the principal and founding partner of Site Concepts International Limited. They have worked on a number of high profile Landscape Architectural projects both in the Asian region & internationally. Site Concepts International (SCI) was formed in 1991 in response to growing regional demand for professional services in landscape architecture, urban design & land use planning. SCI has established a reputation for high quality professional planning & design throughout Asia with active projects in over 8 countries. Site Concept is widely accepted by developers, architects and others in the industry due to their ability to provide unique & divers design solutions. Their project specific techniques, along with sensitivity to the existing environment, the end users and long term sustainability, have set SCI in position of industry leadership. SCI's success is judged on the places created, the enjoyment of the users & sustainability.

Awards and Accolades

- Dosti West County awarded 'Iconic Residential Project' at the Mid-Day International Real Estate & Infrastructure Icons Awards 2024
- Dosti West County awarded 'Excellence in Townships Projects' at the Times Real Estate Conclave and Awards 2023-24
- Dosti Realty Ltd. - Awarded Leading Real Estate Developer of The Year at the Credai MCHI Golden Pillar Awards 2023
- Dosti 1 Mumbai - Awarded Best Marketing Campaign of The Year at the Credai MCHI Golden Pillar Awards 2023
- Dosti Greenscapes - Awarded Iconic Residential Project, Pune - at the Mid-Day International Real Estate & Infrastructure Icons Awards 2023
- Dosti Realty Ltd. - Awarded Iconic Real Estate Brand of the Year - at the Times Real Estate Conclave & Awards 2023
- Dosti Greater Thane, Kalher - Awarded Iconic project of The Year - Beyond Thane at Mid-Day Gems of India Awards, 2023
- Dosti Mezzo 22, Sion - Awarded Iconic Premium Residential Project at Mid-Day International Real Estate & Infrastructure Icons Awards 2022
- Dosti West County - Dosti Nest, Thane (W) - Awarded Iconic Project of the Year at Mid-Day International Real Estate & Infrastructure Icons Awards 2022
- Dosti Eastern Bay, Wadala - Awarded Iconic Residential Project of the Year South Mumbai at the Times Real Estate Conclave & Awards 2021
- Dosti Oro 67, Kandivali (W) - Awarded Upcoming Residential Project - Western Suburbs at the Mid-Day Real Estate International Icons Award 2021
- Dosti Eastern Bay, Wadala - Awarded Iconic Residential Project South Mumbai by Hindustan Times Real Estate Titans 2020
- Dosti Eastern Bay, Wadala - Won Iconic Luxury Homes - South Mumbai by Mid-Day Real Estate Icons Awards 2020
- Dosti Realty - Awarded Developer of the Year (Residential) at the Real Estate Business Excellence Awards, 2020 in association with CNN-News 18
- Dosti West County, Thane (W) - Awarded Iconic Planned Project Central Mumbai 2019 - Mid-day Real Estate Icons Awards 2019
- Dosti West County, Thane (W) - Awarded Iconic Planned Project Central Mumbai 2019 by Mid-Day Real Estate & Infrastructure Icons Award 2019
- Dosti West County, Thane (W) - Awarded Best Project of the Year Thane in 2018 by Accommodation Times
- Dosti West County, Thane (W) - Awarded Ultimate Residential project - Thane in 2018 by Hindustan Times
- Dosti Desire, Thane (W) - Awarded Residential project of the Year Thane in 2018 by Accommodation Times
- Dosti Realty Ltd - Awarded Excellence in Quality Residential Projects by Lokmat Corporate Excellence Awards 2018
- Dosti Realty Ltd - Awarded Best Developer Residential by ET Now in 2018
- Dosti Realty Ltd - Awarded Best Green Building for Dosti Ambrosia - Wadala by ET Now in 2018
- Dosti Realty Ltd - Awarded Real Estate Industry Achievement Award - 2017 Grohe Hurun
- Dosti Desire, Thane (W) - Awarded the Iconic Residential Project, Thane - Mid-Day Real Estate Icons in 2017
- Dosti Realty Ltd - Awarded Iconic Developer Thane by Mid-Day Real Estate Icons (Thane & Navi Mumbai) in 2017
- Dosti Planet North, Shil Thane - Awarded Iconic Residential Project Beyond Thane, Mid-Day Real Estate Icons (Thane & Navi Mumbai) in 2017
- Dosti Planet North, Shil Thane - Certified as Times Realty Icons 2017 Navi Mumbai, Thane & Beyond, in the category of Value Homes (Thane & Beyond) in 2017
- Dosti Majesta, Ghodbunder Road, Thane (W) - Certified as Times Realty Icons 2017 Navi Mumbai, Thane & Beyond, in the category of Ultra Luxury Homes (Thane & Beyond) in 2017
- Dosti Ambrosia, Wadala - Project of the Year Mumbai at the 31st National Real Estate Awards by Accommodation Times in 2017
- Dosti Ambrosia, Wadala - Awarded Iconic Residential Project - South Mumbai at the Mid-Day Real Estate Icons Awards in 2016
- Dosti Ambrosia, Wadala - Certified Gold Rating under IGBC for Green Building by LEED in 2016
- Dosti Acres, Wadala - Awarded 2nd place at the Exhibition for Gardening at the Veermata Jeejabai Bhosle Garden, Byculla by the Tree Authority and Brihan Mumbai Mahanagarpalika in 2015
- Dosti Ambrosia, Wadala - Awarded Best Residential Project of the Year by Construction Times in 2015
- Dosti Vihar, Thane (W) - Won the Premium Apartment Project of the Year (West) by NDTV in 2015
- Dosti Realty Ltd - Ranked Mumbai's Top Developer and the Best in Indian Real Estate for on-time delivery and possession by NDTV in 2014
- Dosti Vihar, Thane (W) - Awarded Project of the Year by Accommodation Times in 2014
- Dosti Imperia, Thane (W) - Pre-certified Green Building aiming for Gold rating by LEED in 2013
- Dosti Vihar, Thane (W) - Won the title of an Artist in Concrete Awards for Space Planning in Big Residential projects by REIFY Artisans & Projects Pvt. Ltd. in 2013
- Dosti Realty Ltd - OHSAS 18001: 2007 (in 2018) & ISO 9001:2008 (in 2012) Certified Company by URS
- Dosti Acres, Wadala - Won the Best Maintained Podium Garden by the Municipal Corporation of Mumbai for 3 consecutive years from 2008 onwards
- Dosti Elite, Sion - Won the 3rd prize for display of class 27-B at the 13th Exhibition for plants, flowers, fruits & vegetables by Municipal Corporation of Mumbai in 2008
- Dosti Elite, Sion - Awarded the Best Maintained Podium Garden for 3 consecutive years
- Dosti Flamingos, Parel-Sewree - Won the Best Maintained Landscaped Garden by the Municipal Corporation of Mumbai in 2005



Site Address: Dosti Greenscapes, Indian Hume Pipe Compound, 2 Km after Race Course, 2 Km before Magarpatta City, Solapur Road, Hadapsar, Pune - 411013. T:+91 86577 03367

Corp. Address: Dosti Realty Ltd., Lawrence & Mayo House, 1st Floor, 276, Dr. D. N. Road, Fort, Mumbai - 400001 • www.dostirealty.com



Dosti Greenscapes - Phase 1, 2, 3 & 4 are registered under MahaRERA No. P52100049942, P52100051041, P52100077059 & P52100077092 and are available on website - <https://maharera.mahaonline.gov.in> under registered projects. Please note that the sale/lease of premises in the above referred project shall be subject to and governed by the terms and conditions of Agreement for Sale/lease. T&C Apply.

Disclosures: (1) The artist's impressions and Stock images used for representation purpose only. (2) Furniture, fittings and fixtures as shown/displayed in the show flat are for the purpose of showcasing only and do not form part of actual standard amenities to be provided in the flat. The flats offered for sale are unfurnished and all the amenities proposed to be provided in the flat shall be incorporated in the Agreement for Sale. (3) The right to admission, use and enjoyment of all or any of the facilities/amenities in the Clubhouses of Dosti Greenscapes is reserved by the Promoters and shall be subject to payment of such admission fees, annual charges and compliance of terms and conditions as may be specified from time to time by the Promoters. (4) The sale of all the premises in Dosti Greenscapes shall be governed by terms and conditions incorporated in the Agreement for Sale. (5) This project is funded by ICICI Bank Ltd.



DOSTI REALTY LTD.
ISO 9001:2015 & ISO 45001:2018
CERTIFIED